

The starlit homes beckon you



COME HOME TO "MY HOME"



A galaxy of homes by "MY HOME"

- 1 Happy Communities
- 2 Superior Living
- 3 Clear Documentation
- 4 Timely Delivery
- 5 Desirable Destinations
- 6 Secure Environment

PASSIONATE.  
COMMITTED.  
ETHICAL.

These three qualities are the core values of My Home Group. Since its inception in 1981, the group has been driven by passion and has dared to be different in thought and action, making us one of the prominent construction companies in South India. My Home Group believes in going beyond the concrete edifice and building lifestyle spaces that create happy communities.

My Home Group personifies commitment to excellence and our 21 landmark projects dot the city skyline as an emblem of our commitment.

 <b>MY HOME RAINBOW</b> MY HOME RAINBOW 220 FAMILIES	 <b>navadweepa</b> <i>Island of tranquility</i> MY HOME NAVADWEEPA 556 FAMILIES	 <b>MY HOME JEWEL</b> MY HOME JEWEL 2,016 FAMILIES
 <b>MY HOME ABHRA</b> <small>WHERE LUXURY REIGNS</small> MY HOME ABHRA 387 FAMILIES	 <b>MY HOME VIHANGA</b> <small>Apartment Homes @ Wipro Junction, Gachibowli</small> MY HOME VIHANGA 1,996 FAMILIES	 <b>MY HOME AVATAR</b> <small>THE JOY OF INCLUSIVE LIVING</small> MY HOME AVATAR 2,780 FAMILIES
 <b>MY HOME BHOOJA</b> <small>A LIFE ABOVE</small> MY HOME BHOOJA 1,544 FAMILIES	 <b>MY HOME KRISHE</b> <small>happy living is here!</small> MY HOME KRISHE 650 FAMILIES	 <b>My Home mangala</b> <small>WHERE HAPPINESS RESIDES!</small> MY HOME MANGALA 1,879 FAMILIES
 <b>MY HOME ANKURA</b> <small>Let The New Life Begin</small> MY HOME ANKURA 603 FAMILIES	 <b>MY HOME TARKSHYA</b> <small>IT'S NOT AN ADDRESS. IT'S AN IDENTITY.</small> MY HOME TARKSHYA 660 FAMILIES	 <b>MY HOME TRIDASA</b> <small>THE GREEN SIDE</small> MY HOME TRIDASA 2,682 FAMILIES
 <b>MY HOME HUB</b> 0.43 MILLION SFT	 <b>THE SKYVIEW</b> <small>An RMZ Corp &amp; My Home Initiative</small> THE SKYVIEW 3.99 MILLION SFT	 <b>TWITZA</b> TWITZA 1.2 MILLION SFT



LOVE.  
LAUGHTER.  
LIFE.



A moon of joy and happiness

What does one look for when investing in a home?  
A well-connected location.  
A premium gated community with great amenities.  
A reputed and trusted builder.  
But most of all,  
we look for a space to create memorable moments with our loved ones in an abode of peace.

**My Home Raka** is about love, laughter and life.







\*Images are illustrative

## STEP IN. YOUR HOME AWAITS

This wonderful gated community encompasses a standalone G+34 tower, offering 300 luxurious and all feature-packed and backed apartments with the finest infrastructure and world-class amenities.

Your home in **My Home Raka** is perfect for today's jet-setting families. Swing by.





YOUR MOON  
AT HEART  
CENTRE  
OF MIYAPUR

This is My Home Raka, one of the most coveted addresses near the IT zone of Hitec City and well-connected to Gachibowli.

Images are illustrative

MY HOME  
**RAKA**  
YOU DESERVE THE MOON





MINIMALIST.  
BEAUTIFUL.  
COOL.



Silken walls, lovely floors, large windows, and fine fittings go into the making of this luxury cocoon that allows streams of sunshine to flow freely into your home. Live with sunshine in your so spacious home!







Images are illustrative



Images are illustrative

## INDOOR AMENITIES

- Double Height Entrance Lobby
- F&B
- Lounge
- Reading Room
- Multipurpose Halls
- Indoor Badminton Court
- Indoor Games
- Gym
- Yoga / Aerobics
- Guest Rooms 6 No's

## PROVISION FOR

- Supermarket
- Spa & Saloon
- Health Centre
- Pharmacy
- Laundry





\*Images are illustrative



\*Images are illustrative



\*Images are illustrative

Even from a distance, the sight of the tower within the complex is breathtaking. The architects have kept the design minimalist and uber-cool. The neat lines of the structure match the landscaped grounds in creativity.

Every element of this modern abode is beautiful, inside out!







\*Images are illustrative

Sometimes, the outside world is as important as the home itself. The fresh open spaces are full of warm surprises. There are green manicured lawns, children's parks, colorful blossoms, shaded seats for the elderly and leafy walking trails - all lit up!

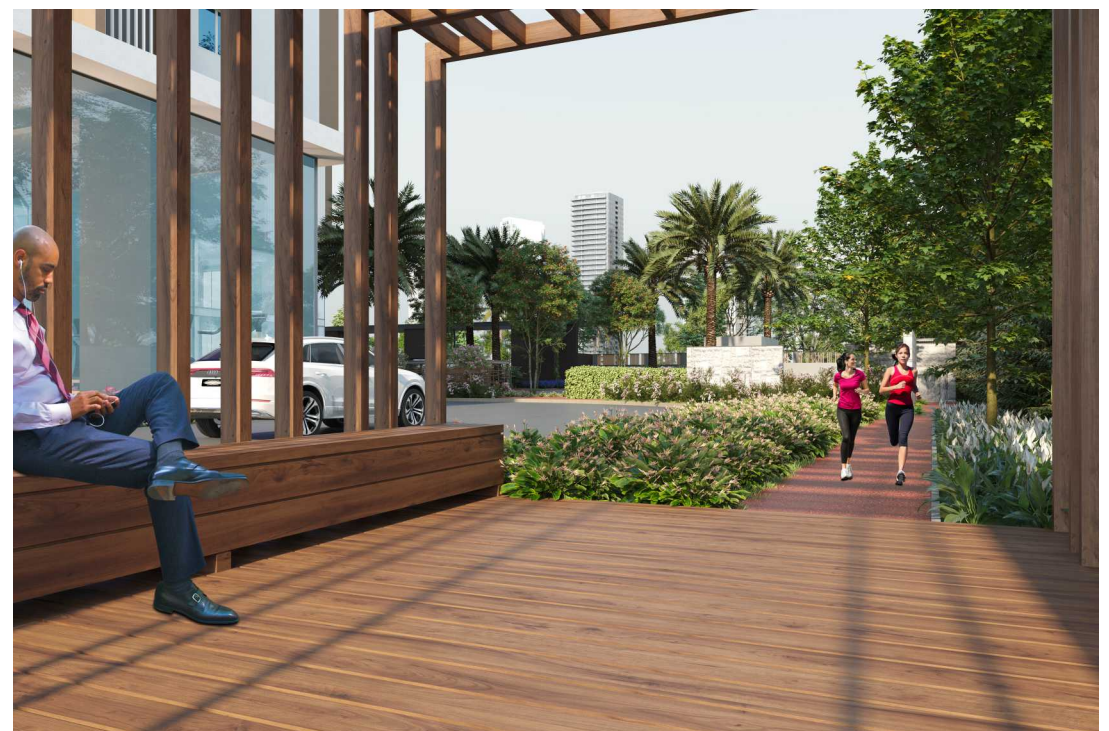
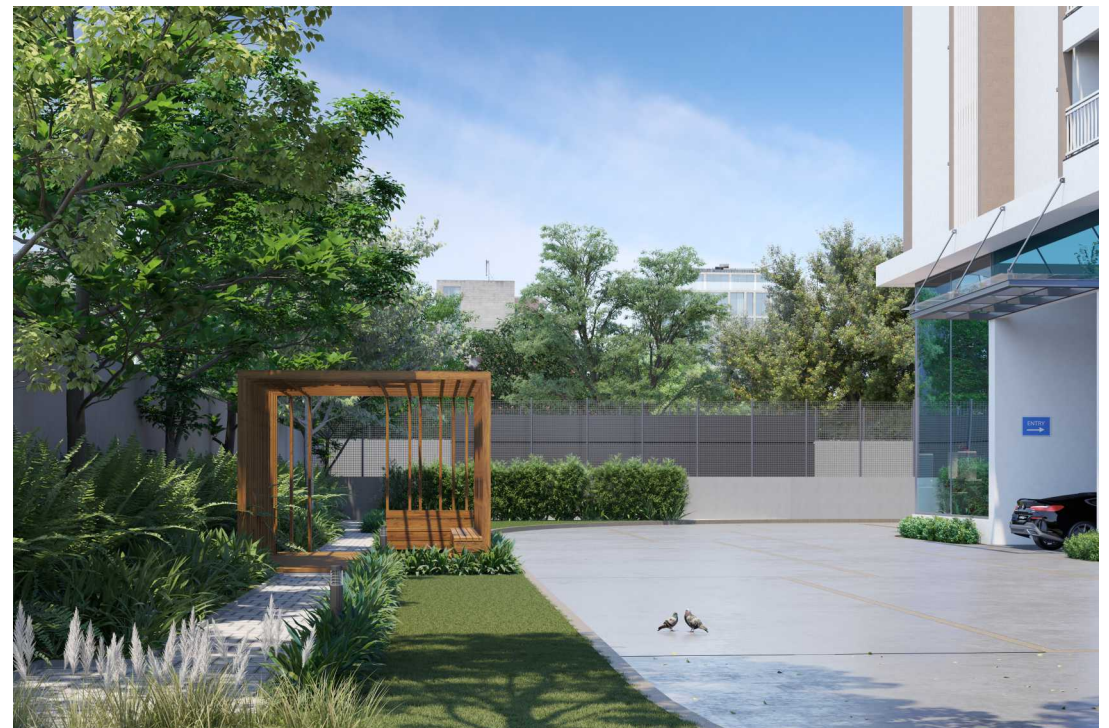
Welcome to a fairytale world  
where you can find peace and comfort.







\*Images are illustrative

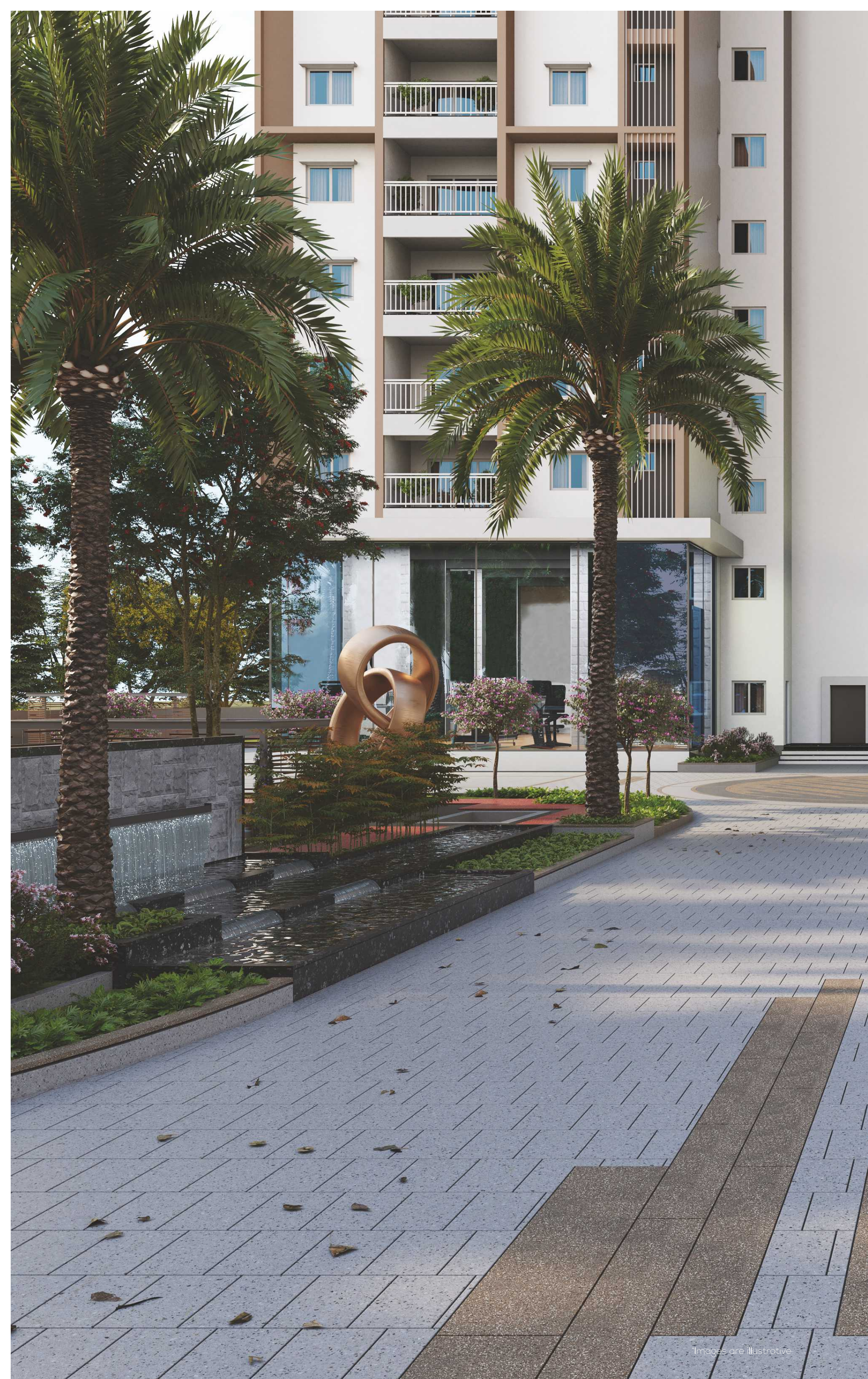


\*Images are illustrative

GREEN.  
OPEN.  
LANDSCAPED.







Images are illustrative



Images are illustrative

#### OUTDOOR AMENITIES

Landscaped areas with lawns, planter boxes and planters

Temperature Controlled Swimming pool

Open Gym

Jogging Track

Kids play Area

Half Basketball Court

Cricket Practice Net

Cycling Track

Party Lawn Area & Stage

Elderly Seating Deck under Pergola

All Drive ways finished with Interlocking pavers/ Granite inlays/ Grass pavers

#### AMENITIES ON TERRACE

Mini Tennis Court

Mini Football Court

Party Plaza

Seating Deck under Pergola

EXCLUSIVE.  
LUXURIOUS.  
SUNNY.

MY HOME  
**RAKA**  
YOU DESERVE THE MOON





\*Images are illustrative

MY HOME  
**RAKA**  
YOU DESERVE THE MOON





\*Images are illustrative



SPRAWING  
SPACES  
THAT DEFINE  
LIVELINESS.

MY HOME  
**RAKA**  
YOU DESERVE THE MOON

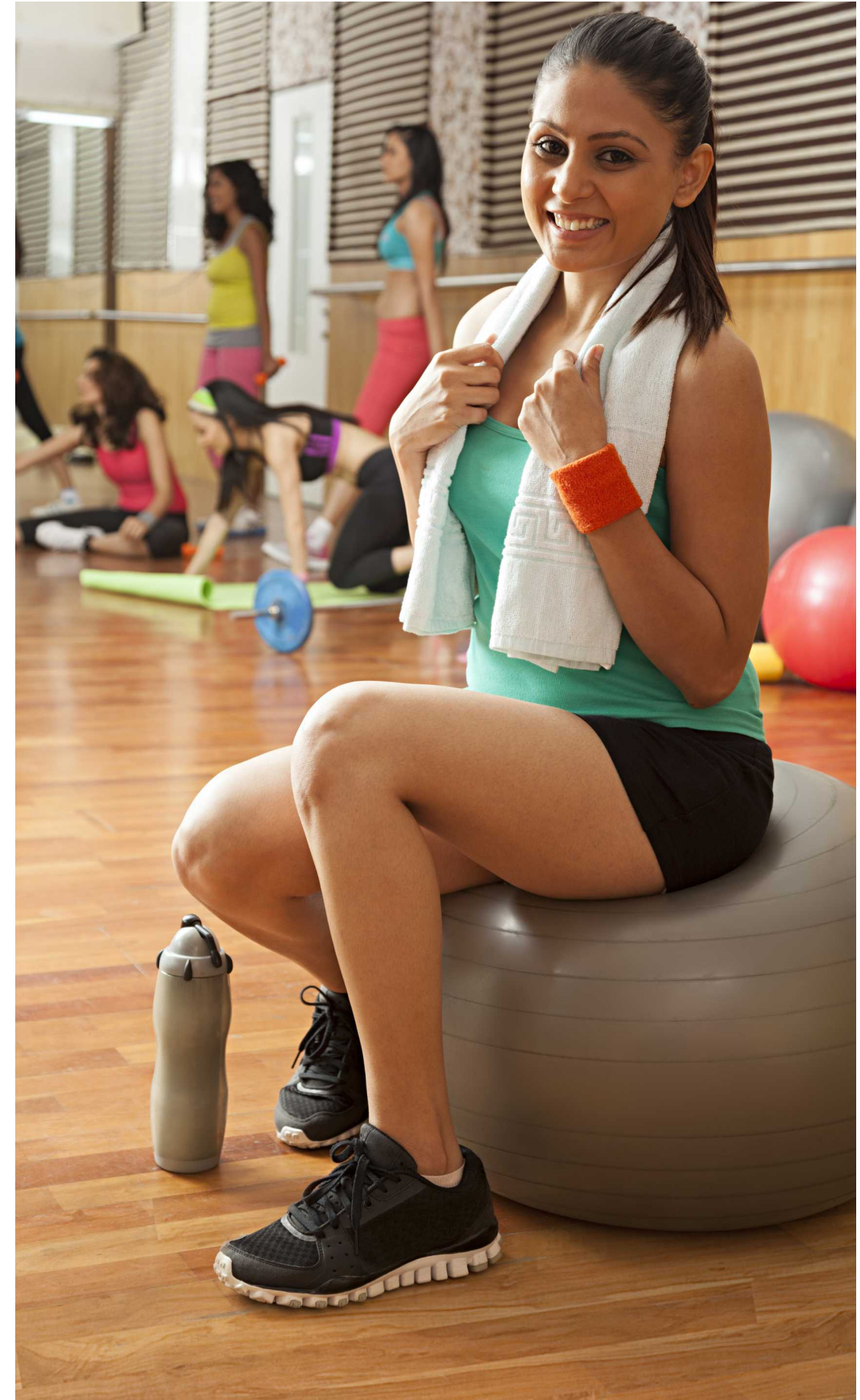


RENEW.  
REFRESH.  
RECHARGE.



MY HOME  
**RAKA**  
YOU DESERVE THE MOON

Images are illustrative



And for leisure seekers who have fitness on their minds, there are a plethora of fun options. From splashing around in the swimming pool to doing cardio at the gym, from playing indoor games to taking over the badminton court, from hosting parties at the banquet hall to having a coffee at the cafeteria - amenities at My Home Raka are what dreams are made of!



WHEN YOU  
LOOK FOR  
THE MOON  
IT STARTS  
HERE.



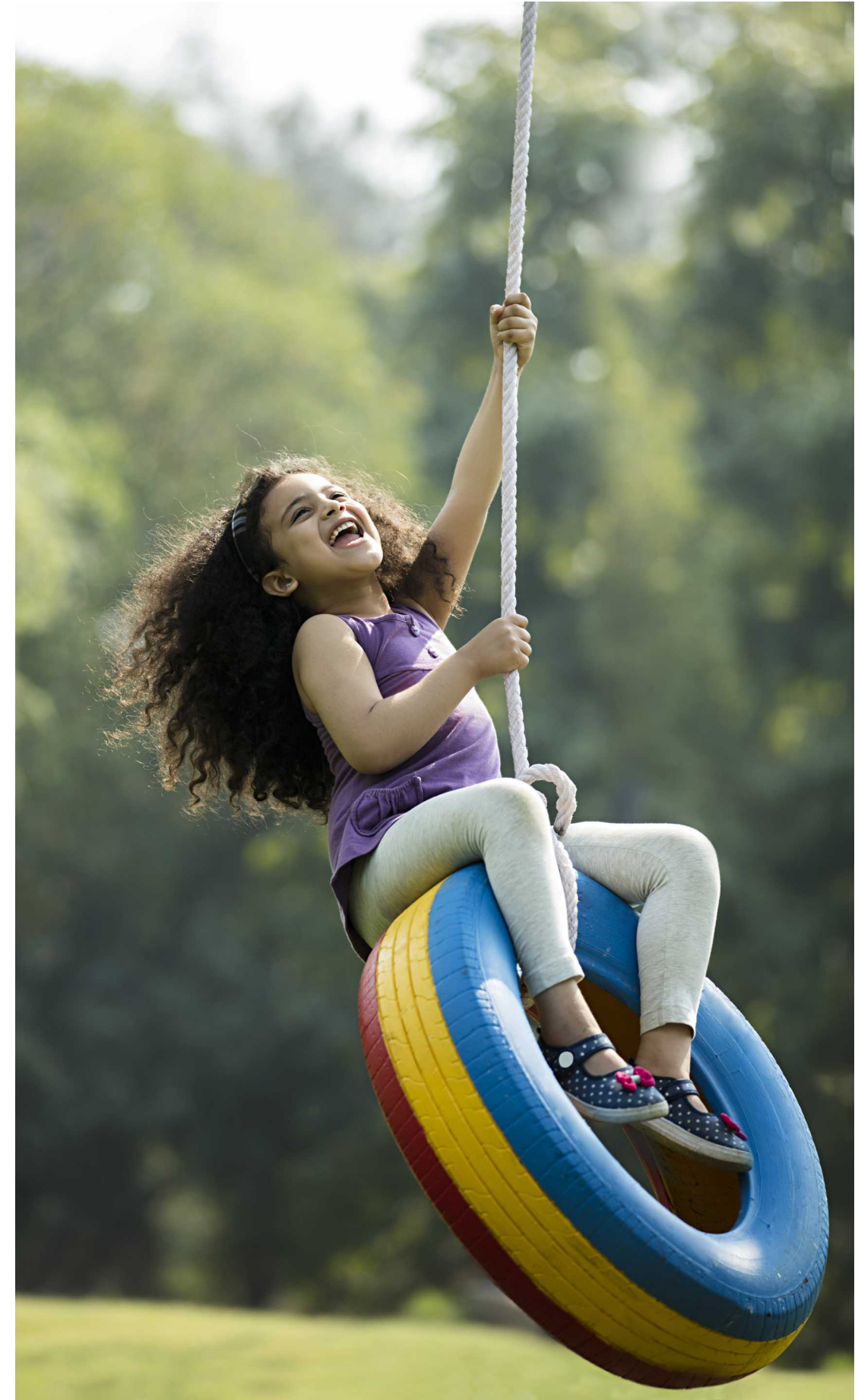
\*Images are illustrative

MY HOME  
**RAKA**  
YOU DESERVE THE MOON





\*Images are illustrative



PLAY.  
SWEAT.  
JOG.  
RUN.







STARRY  
LOBBIES.  
ENTERTAIN  
FRIENDS,  
FLAUNT  
AND  
ENJOY.

\*Images are illustrative



# SITE LAYOUT PLAN

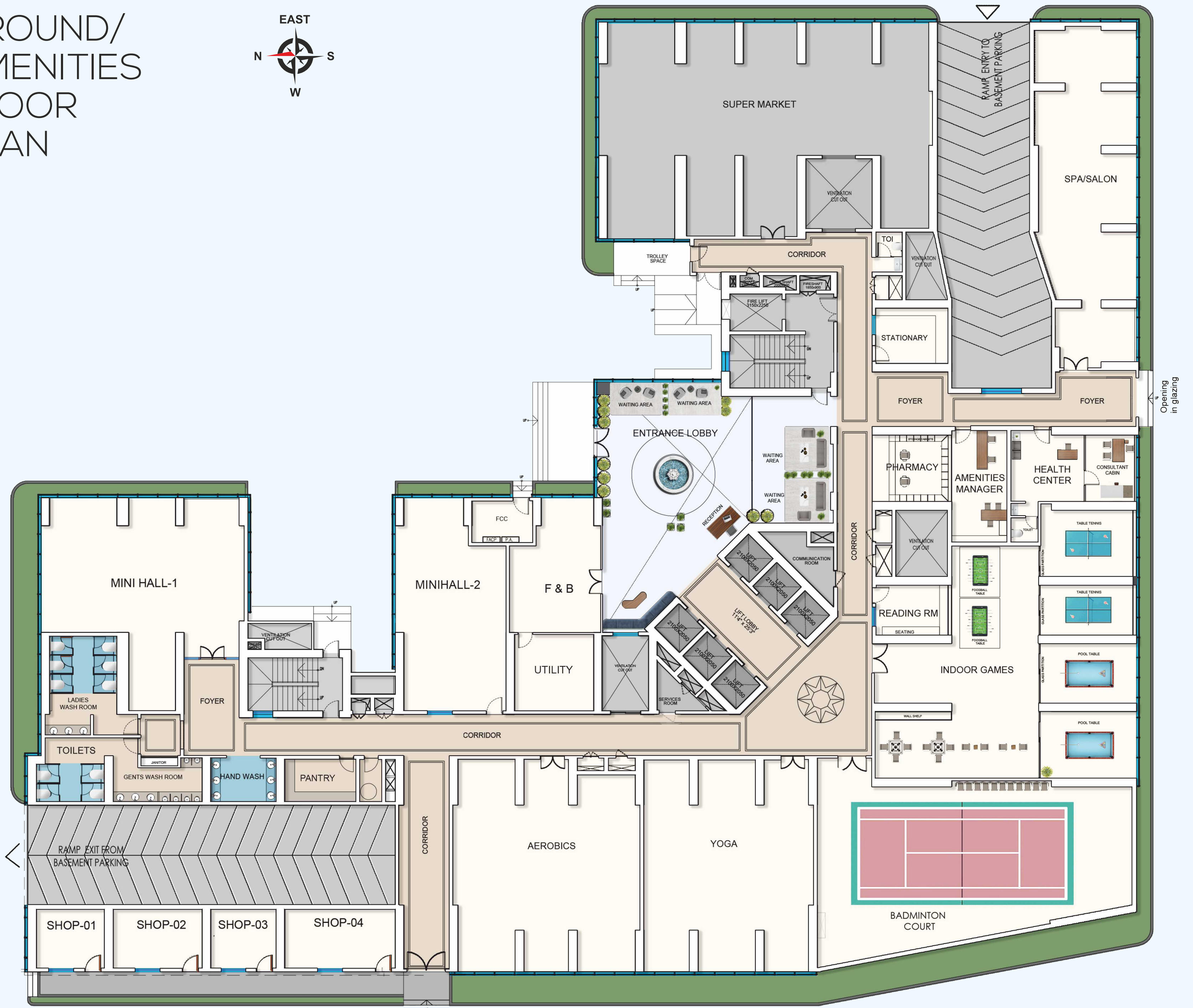
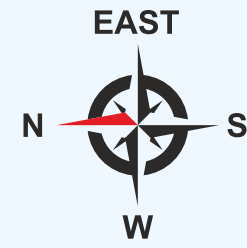
## LEGEND

- 01. Main Entrance/Exit
- 02. Arrival Plaza
- 03. Entrance Drop off Area
- 04. Driveway
- 05. Water Body at the Entrance
- 06. Jogging Track
- 07. Stage
- 08. Party Lawn
- 09. Pool Deck
- 10. Lap Pool
- 11. Kids Pool
- 12. Open Shower
- 13. Seating Deck under Pergola
- 14. Lawn
- 15. Pool Entrance
- 16. Cycle Track
- 17. Elder's Seating Deck under Pergola
- 18. Open Gym
- 19. Cricket Practice Net
- 20. Children's Play Area
- 21. Half Basketball Court
- 22. Transformer Yard
- 23. Ventilation Cutout
- 24. Entry to Basement Parking
- 25. Exit from Basement Parking
- 26. Open Terrace
- 27. Service Staircase



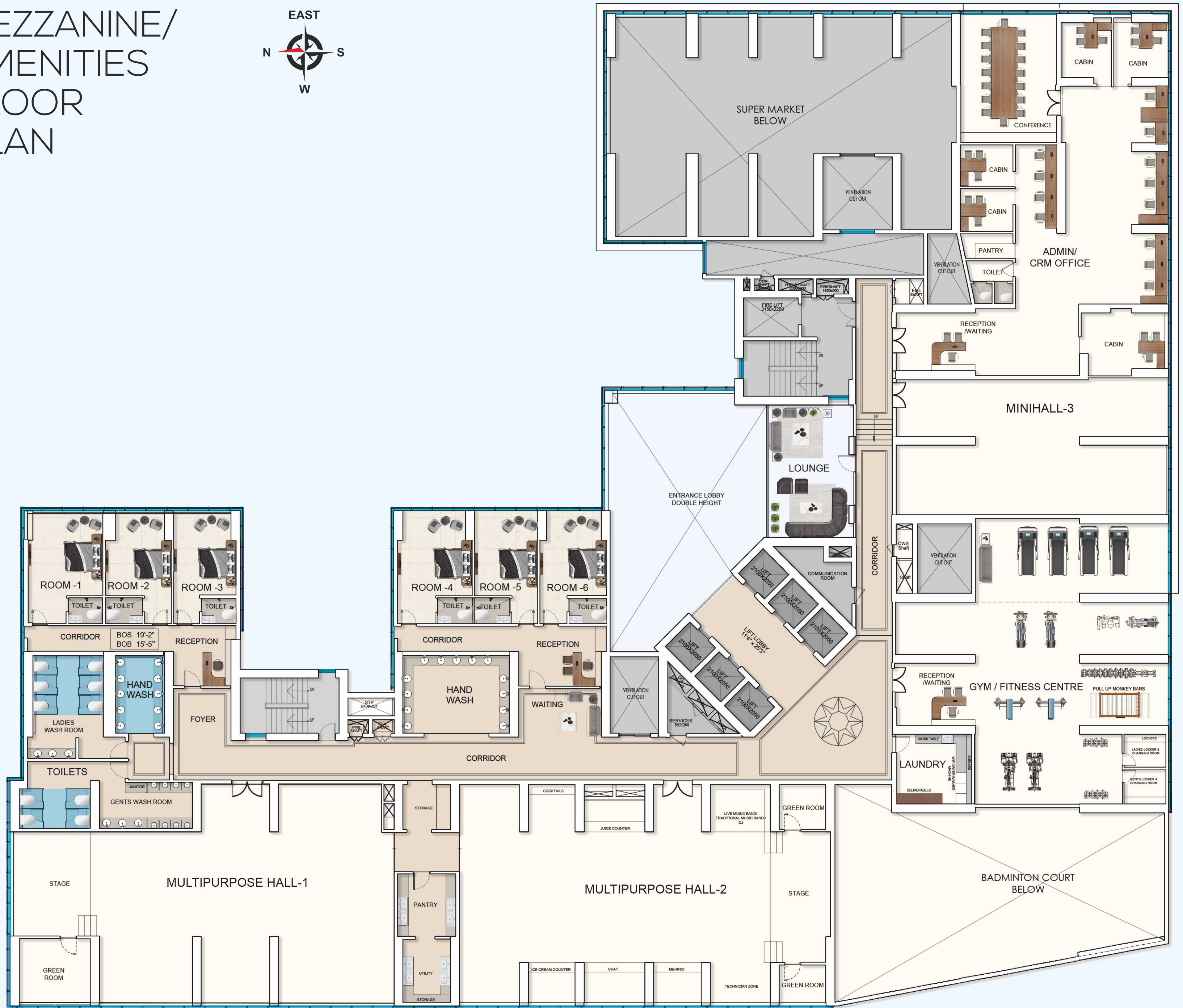
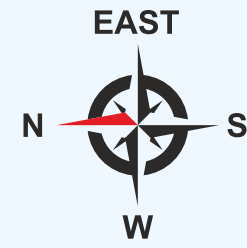


# GROUND/ AMENITIES FLOOR PLAN



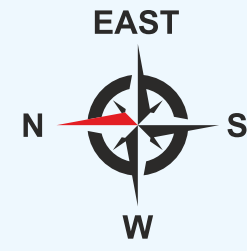


# MEZZANINE/ AMENITIES FLOOR PLAN





# FIRST FLOOR PLAN



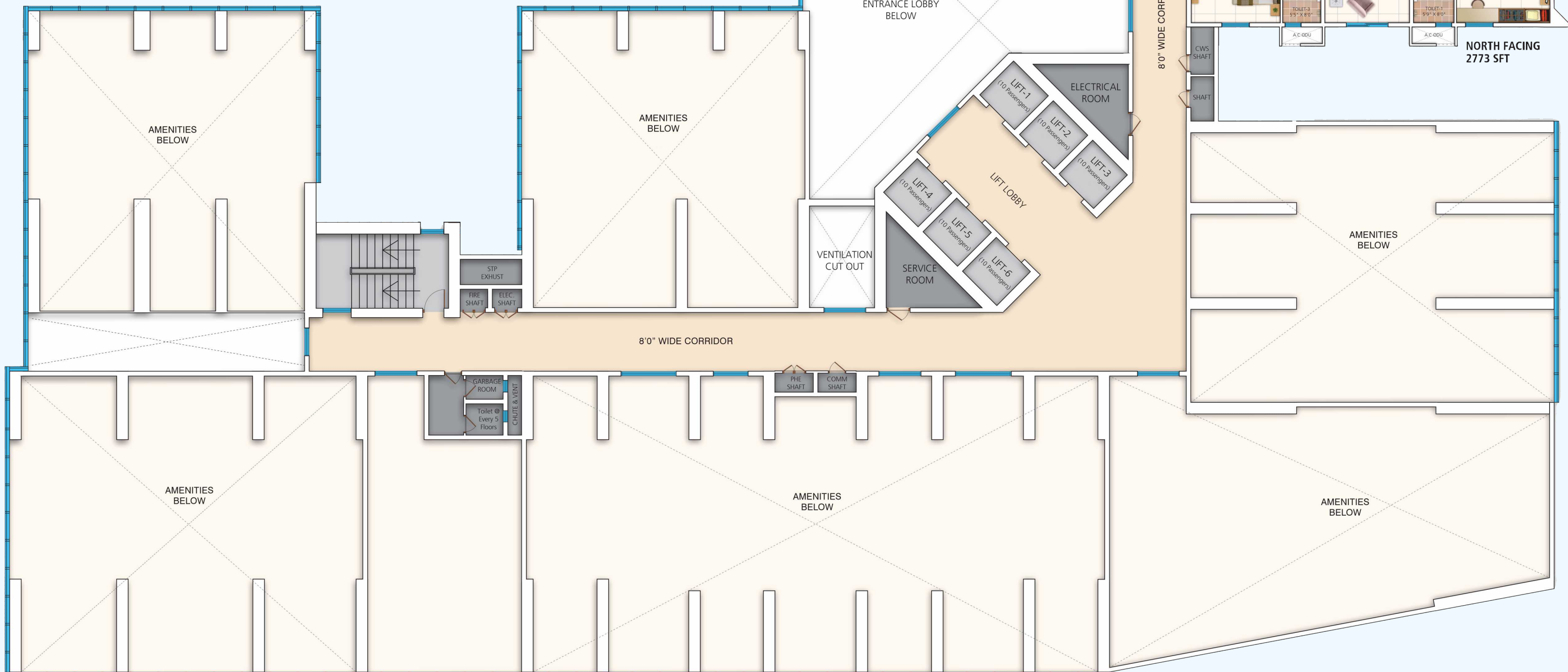
WEST FACING  
2244 SFT

6'6" WIDE CORRIDOR

WEST FACING  
2806 SFT



NORTH FACING  
2773 SFT



AMENITIES BELOW

AMENITIES BELOW

ENTRANCE LOBBY BELOW

ELECTRICAL ROOM

LIFT LOBBY

SERVICE ROOM

VENTILATION CUT OUT

AMENITIES BELOW

8'0" WIDE CORRIDOR

AMENITIES BELOW

AMENITIES BELOW

AMENITIES BELOW

STP EXHUST

FIRE SHAFT

ELEC. SHAFT

GARBAGE ROOM

Toilet @ Every 5 Floors

CHUTE & VENT

FIRE SHAFT

COMM. SHAFT

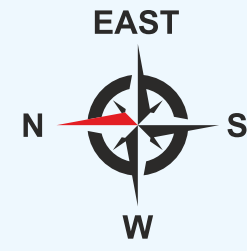
ELEC. SHAFT

CWS SHAFT

SHAFT



# TYPICAL FLOOR PLAN



WEST FACING 2244 SFT

WEST FACING 2806 SFT



WEST FACING 2244 SFT



WEST FACING 2244 SFT



NORTH FACING 2773 SFT



NORTH FACING 2806 SFT



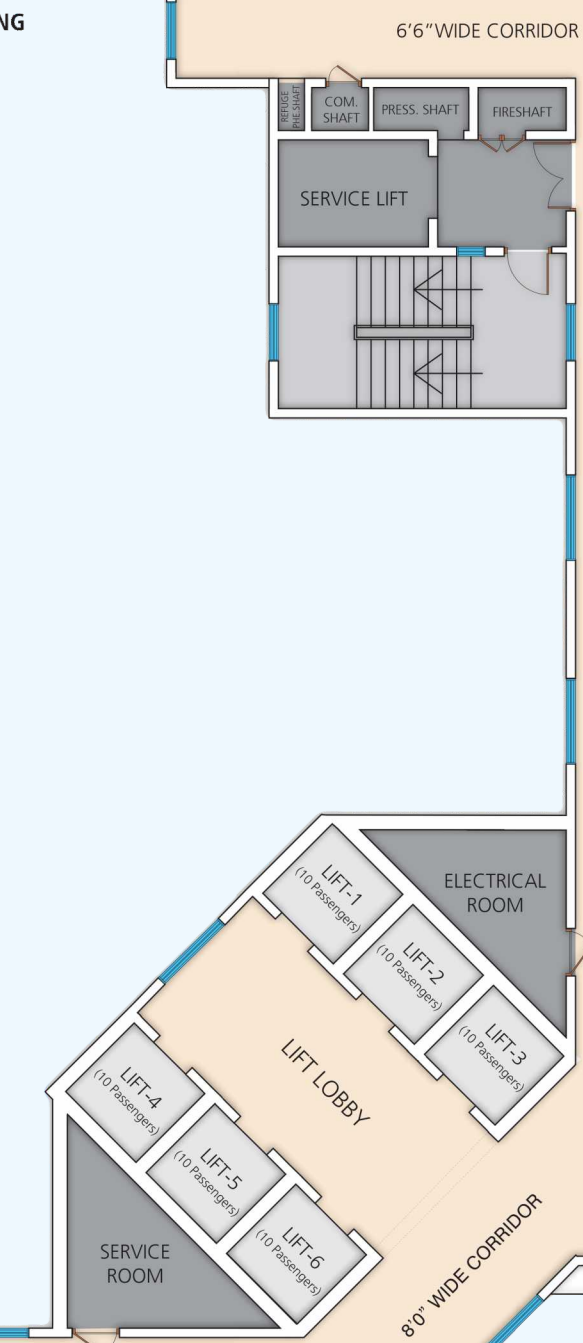
EAST FACING 2806 SFT



EAST FACING 1969 SFT



EAST FACING 1969 SFT



6'6" WIDE CORRIDOR  
8'0" WIDE CORRIDOR  
8'0" WIDE CORRIDOR



01

NORTH FACING  
**3 BHK**  
2806 SQ. FT.

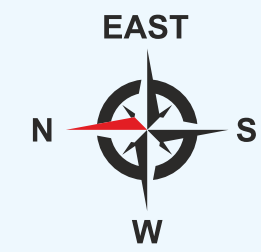
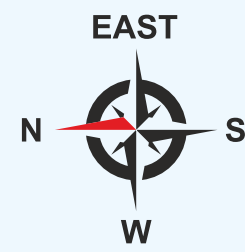
KEY PLAN



02

NORTH FACING  
**3 BHK**  
2773 SQ. FT.

KEY PLAN





03

WEST FACING  
**3 BHK**  
2806 SQ. FT.

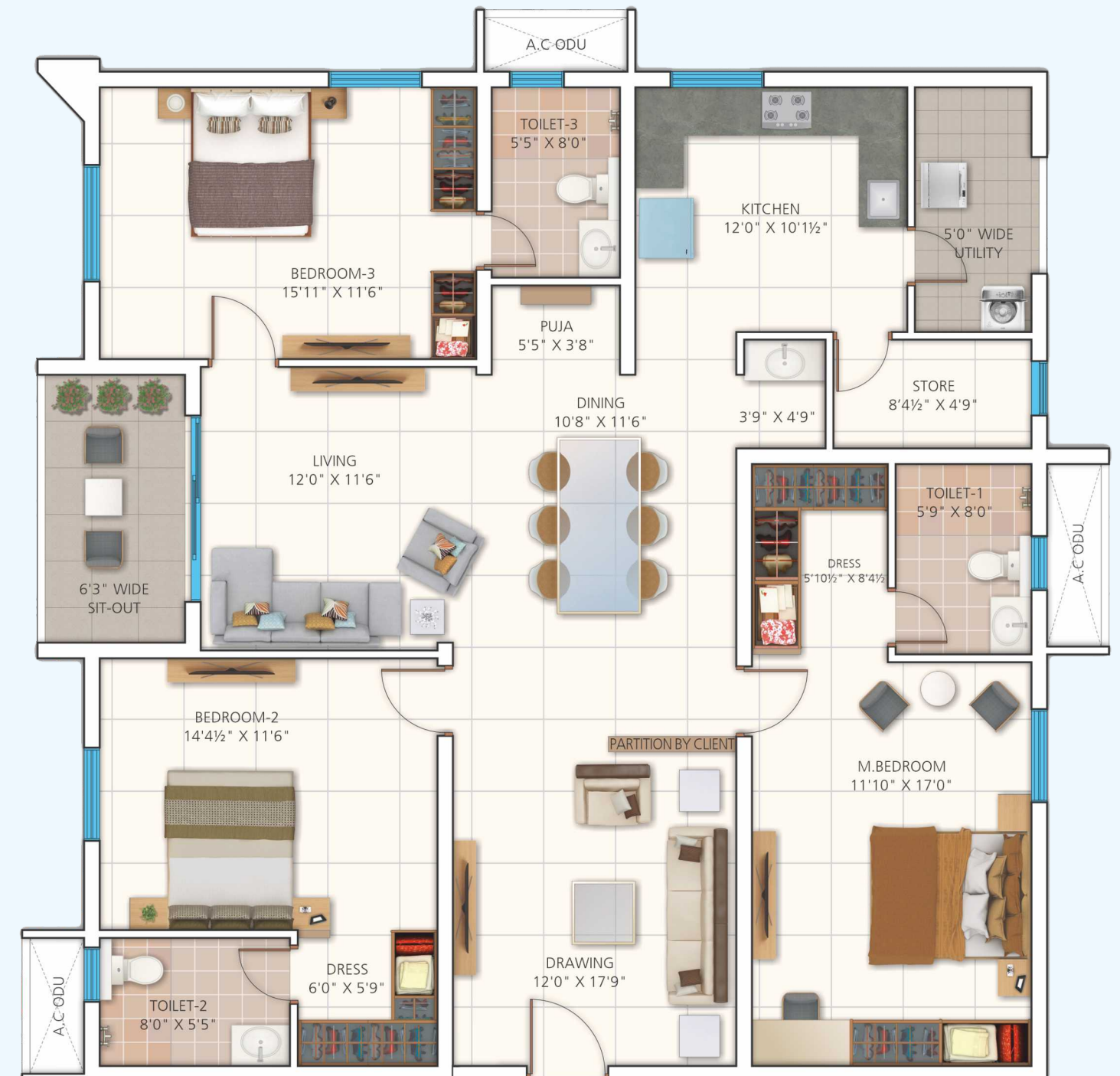
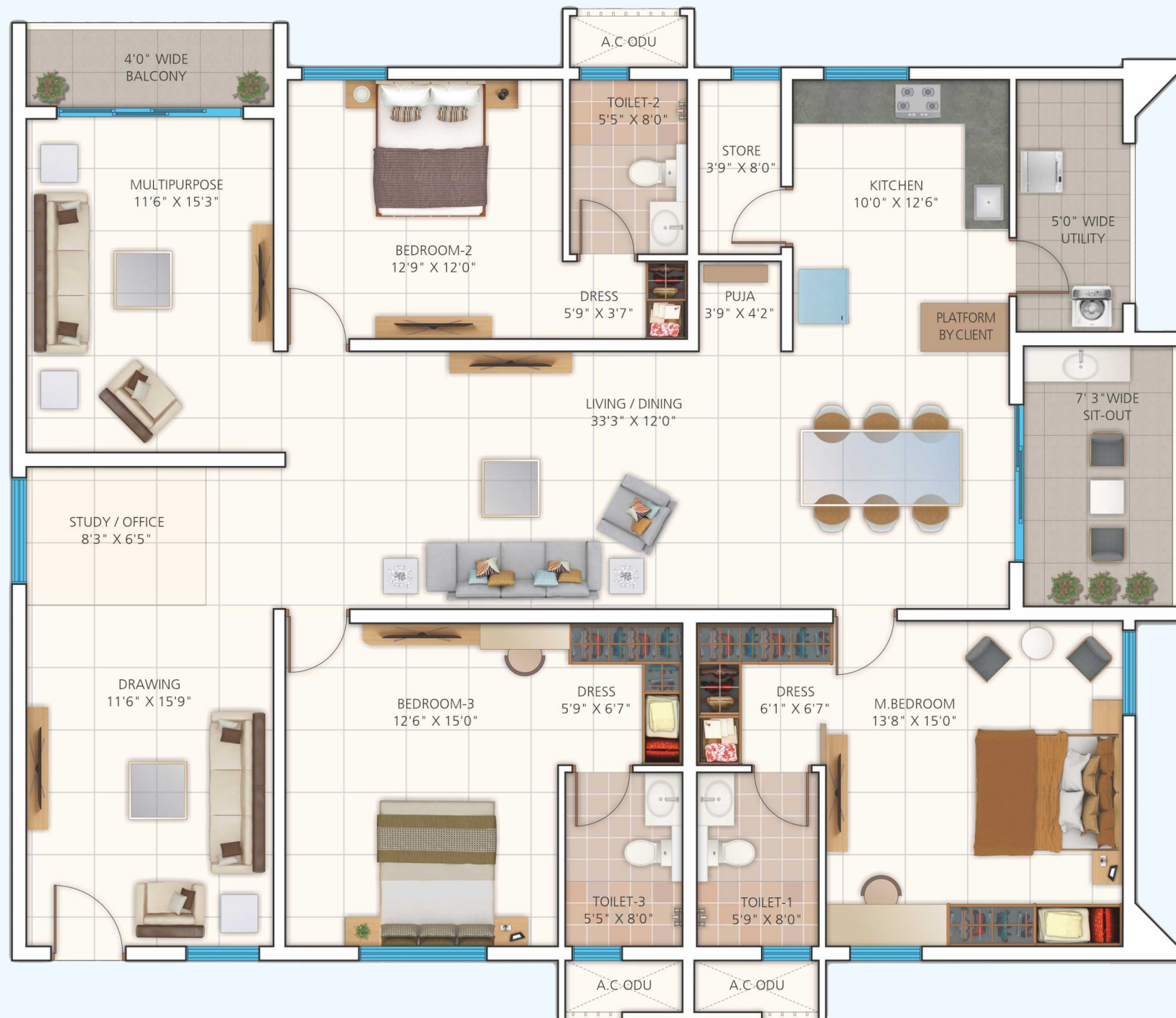
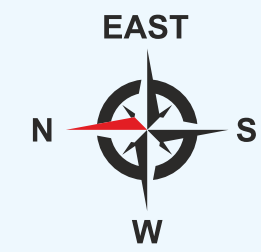
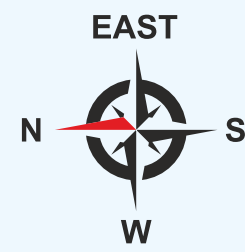
KEY PLAN



04

WEST FACING  
**3 BHK**  
2244 SQ. FT.

KEY PLAN



05 06

EAST FACING  
**3 BHK**  
 1969 SQ. FT.

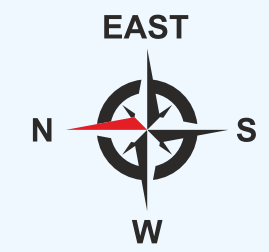
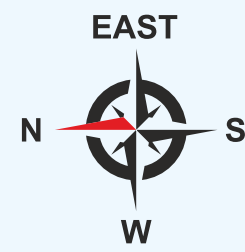
KEY PLAN



07

WEST FACING  
**3 BHK**  
 2244 SQ. FT.

KEY PLAN

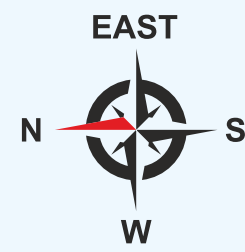




08

EAST FACING  
**3 BHK**  
2806 SQ. FT.

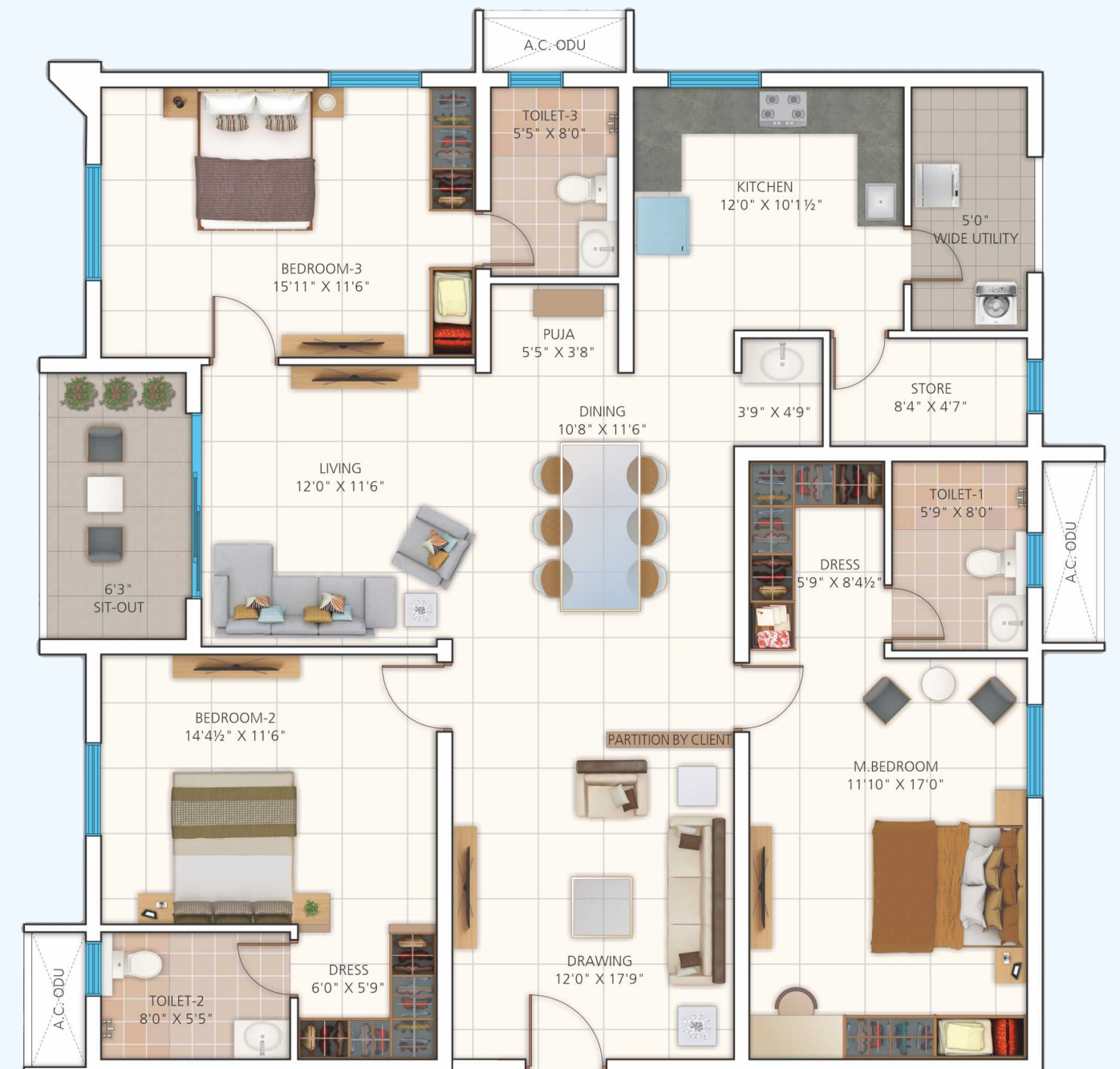
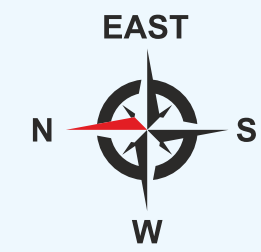
KEY PLAN



09

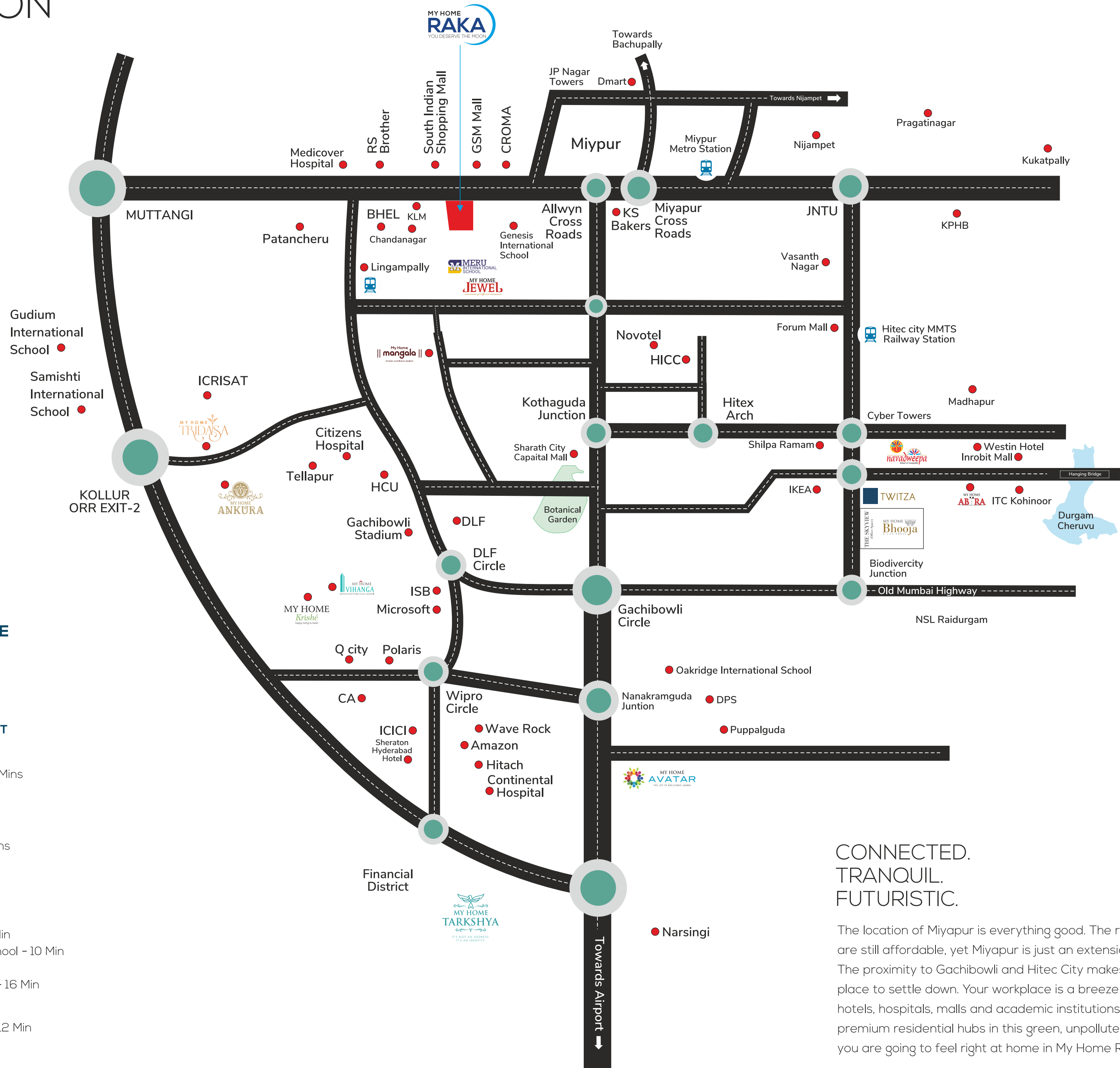
WEST FACING  
**3 BHK**  
2244 SQ. FT.

KEY PLAN





# LOCATION



## DISTANCES FROM SITE

### CORPORATE OFFICES

Cyber Towers - 20 Mins  
 Bio Diversity Park - 25 Mins  
 Financial District - 30 Mins

### SHOPPING & ENTERTAINMENT

GSM Mall - 2 Mins  
 KLM Shopping Mall - 5 Mins  
 Sharath City Capital Mall - 20 Mins  
 IKEA - 22 Mins  
 Inorbit Mall - 25 Mins

### HOSPITALS

Medicover(Lingampalli) - 10 Mins  
 KIMS (Kondapur) - 15 Mins  
 Citizen Hospitals - 15 Mins  
 AIG Hospitals - 25 Min

### SCHOOLS

Meru International School - 1 Min  
 Sancta Maria International School - 10 Min  
 Chirec Public School - 16 Min  
 Manthan International School - 16 Min

### RAILWAY STATION

Lingampally Railway Station - 12 Min

### AIRPORT

RGIA - 45 Min

CONNECTED.  
 TRANQUIL.  
 FUTURISTIC.

The location of Miyapur is everything good. The real estate prices are still affordable, yet Miyapur is just an extension of the IT zone. The proximity to Gachibowli and Hitec City makes it a fantastic place to settle down. Your workplace is a breeze away, so are hotels, hospitals, malls and academic institutions. With several premium residential hubs in this green, unpolluted neighbourhood, you are going to feel right at home in My Home Raka.



**SUPER STRUCTURE**

RCC shear wall-framed structure, resistant to wind and earthquake (Zone -2).

**WALLS**

EXTERNAL WALL: Reinforced shear wall  
INTERNAL WALL: Reinforced shear wall

**CEILING FINISHES**

DRAWING, DINING, LIVING, BEDROOMS, KITCHEN AND BALCONY: Smoothly finished with putty and acrylic emulsion paint.  
BATHROOMS: Grid ceiling to cover all service lines.

**WALL FINISHING**

DRAWING, DINING, LIVING, BEDROOMS, KITCHEN AND BALCONY: Smoothly finished with putty and acrylic emulsion paint.  
BATHROOMS: Reputed make of GVT/Ceramic tiles cladding up to lintel height.  
EXTERNAL FINISHING: Texture Finish & two coats of exterior emulsion paint of reputed brands with architectural features.

**FLOORING**

DRAWING, DINING, LIVING, BEDROOMS, KITCHEN: 800 x 800 mm size double charged vitrified tiles of reputed brand with spacer joint.  
BALCONY/ BATHROOMS/ UTILITY: Anti-skid vitrified/ceramic tiles  
CORRIDORS: Vitrified tiles with spacer joint  
STAIRCASE: Natural Stone/Granite

**WINDOWS / GRILLS**

All windows are of Aluminum alloy/ UPVC glazed sliding / open-able shutters with EPDM gaskets, necessary hardware with M.S. Grill and provision for mosquito mesh shutter.

**DOORS**

MAIN DOOR: Hard wood frame, finished with melamine spray polish. Teak finished flush shutters with reputed hardware.  
INTERNAL DOORS: Hard wood frame or factory made wooden frame with both side laminated flush shutter with reputed hardware.  
BATHROOMS/UTILITY DOORS: Granite frame with both side laminated flush shutter with reputed hardware.  
BALCONIES: Aluminum/UPVC glazed French sliding doors with mosquito mesh provision.

**ALL BATH ROOMS**

Vanity type wash basin with single lever basin mixer.  
EWC with flush tank of the reputed brand.  
Single lever bath and shower mixer.  
Provision for geysers in all bathrooms.  
All faucets are chrome plated of reputed brands.

**KITCHEN**

Granite platform with single bowl stainless steel sink.  
Provision for water purifier.

**ELECTRICAL**

Concealed copper wiring of reputed make.  
Power outlet for air conditioners in all Bed rooms and living.  
Power outlets for geysers in all bathrooms and utility.  
Power outlets for chimney, hob, refrigerator, microwave oven, mixer/grinder in kitchen.  
Washing machine and dishwasher point in utility area .  
Three phase supply for each unit and individual Prepaid meters.  
Miniature circuit breakers (MCB) for each distribution board of reputed make.  
Modular switches of reputed make.

**TV/TELEPHONE**

Telephone point in drawing and Master Bedroom.  
Intercom facility to all units Connecting Security.  
Provision for Cable TV Connection in Drawing, Living and all Bedrooms.  
One internet connection provision in Drawing, Living and all Bedrooms.

**WATER PROOFING**

Waterproofing shall be provided for all Bathrooms, Balconies, Utility Area & Roof terrace.

**SECURITY**

Sophisticated round the clock security/ surveillance system.  
Surveillance cameras at the main security and at the entrance of the block & lift cabin.

**FIRE SAFETY**

Fire alarm, automatic sprinklers and wet risers as per Fire Authority Regulations.

**POWER BACK UP**

100% DG backup with acoustic enclosure and AMF.

**LPG/PNG**

Supply of LGP/ PNG with piped gas system.

**LIFTS**

V3F drive high speed lifts of Reputed make.  
Lift lobby cladding with vitrified tiles/granite.

**WTP & STP**

Water treatment plant for bore-well water and water meter for each unit.  
A Sewage Treatment plant of adequate capacity as per norms inside the project.  
Treated sewage water for the landscaping and flushing purpose.

**BILLING SYSTEM**

Automated prepaid billing system for Water, Power, Gas, & Maintenance.

**AREA STATEMENT (IN SFT)**

Flat No.	Facing	Type	Carpet Area	Exclusive Balcony Area	Common area (Incl. External Walls)	Saleable Area
01	North	3 BHK	1948	125	733	2806
02	North	3 BHK	1966	82	725	2773
03	West	3 BHK	1948	125	733	2806
04	West	3 BHK	1581	67	596	2244
05	East	3 BHK	1371	67	531	1969
06	East	3 BHK	1371	67	531	1969
07	West	3 BHK	1581	67	596	2244
08	East	3 BHK	1948	121	737	2806
09	West	3 BHK	1581	67	596	2244



DEVELOPERS



**My Home Constructions Pvt. Ltd**  
8th Floor, Block - 3, My Home Hub, Madhapur  
Hyderabad - 500 081, Telangana  
**Ph: +91 40 - 6688 8888, 91000 88888**

---

✉ [mktg@myhomeconstructions.com](mailto:mktg@myhomeconstructions.com)

🌐 [www.myhomeconstructions.com](http://www.myhomeconstructions.com)

---



**TS RERA NO. P02400003777**

Note: This brochure is purely a conceptual presentation and not a legal offering.  
The company reserves the right to make changes in elevation, specifications and plans as deemed fit.